

# THERMAL OXYGEN LANCES

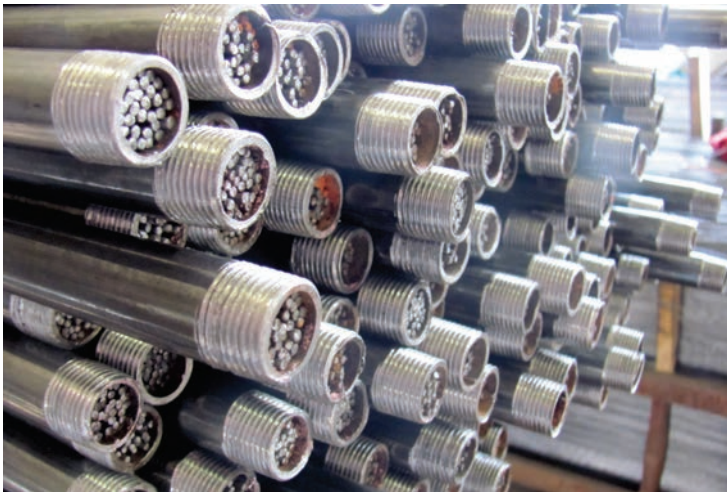


We are offering full job-ready kit, which includes CONTESSI lance holder with spare parts, oxygen hoses, pressure regulator and backfire device. This will allow you to start cutting with lances immediately. If you already have the lance holder for 3/8" lances, the only part what is needed to be changed to use 16 mm with the same lance holder – is the rubber seal. Also, spare parts (vices, bearings, rubbers, rings) are available for CONTESSI, BEDA, ALBA and other manufacturers. Below you can see the specification table of our lances.

Thermal oxygen lances, types (ø × length, mm)	Weight / 1pc, kg	Wall thickness, mm	Wire rods, pcs	Wire ø, mm
thermische Sauerstoffkernlanzen, Ausführung (ø × Länge, mm)	Gewicht / Stück, kg	Wandstärke, mm	Anzahl Drahtstäbchen, Stück	Draht ø, mm
10 × 500	0.212	1.00	8	2.20
10 × 1000	0.424	1.00	8	2.20
10 × 1500	0.670	1.00	8	2.20
10 × 3000	1.340	1.00	8	2.20
13 × 1000	0.706	1.00	16	2.20
13 × 1500	1.110	1.00	16	2.20
13 × 3000	2.220	1.00	16	2.20
16 × 3000	3.500	1.50	22	2.20
BSP 3/8" (17,2mm) × 3000, Threaded with coupling	4.500	2.30	22	2.20
BSP 3/8" (17,2mm) × 3000, Non-threaded	4.350	2.30	22	2.20
1/2" (21,3mm) × 3000, Threaded with coupling	7.075	2.60	40	2.20
1/2" (21,3mm) × 3000, Non-threaded	6.975	2.60	40	2.20
3/4" (26,9mm) × 3000 - Threaded with coupling	10.125	2.60	68	2.20
3/4" (26,9mm) × 3000 - Non-threaded	9.975	2.60	68	2.20
3/8" USA size (9,53mm) × 500	0.204	1.00	7	2.20
3/8" USA size (9,53mm) × 1000	0.408	1.00	7	2.20
3/8" USA size (9,53mm) × 1500	0.617	1.00	7	2.20
3/8" USA size (9,53mm) × 3000	1.235	1.00	7	2.20
1/4" USA size (6,35mm) × 600	0.093	0.70	10	1.20
1/4" USA size (6,35mm) × 1200	0.211	0.70	10	1.20



# THERMAL OXYGEN LANCES



## WORK OF EXCEPTIONAL PRECISION

B2B Metalworks produces different thermal oxygen lances/burning lances, which are used for cutting scrap, runnings or billets (as well as for emergency works by machinery equipment, furnaces by steel works and foundries). We can produce a wide range of lances for our client's needs - from 6,35 × 600 mm till ¾" × 3000 mm, filled with wires through the whole length of the tube or with partial filling, threaded or not.

The lances can contain a variety of wires depending on requirements. 95% of our lances however contain 2,2 mm wire. We have very good reasons for that: it costs us more work to produce the lances to compare with 3 mm filling from our competitors in Europe for instance, but the quality of the lances is much better. Lances filled with 3 mm wire often go out, have bigger oxygen consumption rate and longer combustion time. Very important point is, that lances filled with 2,2 mm wire get more work done / are more efficient. Lance filled with 3 mm wire do burn longer in time, but during the same period of time they cut less than a lance filled with 2,2 mm wire. Lances containing 2,2 mm wire have a higher level of efficiency. While they do not last as long, they will consume less oxygen and cut more than the lances filled with 3 mm wire.

For standard cutting work we recommend our 16 × 3000 mm lances made from a  $\varnothing$ 16mm tube with 1,5 mm wall thickness containing 22 of 2,2 mm wire rods. These lances have the same cutting capacity as 3/8" × 3000 mm lances, but are lighter in weight and are approximately 20% cheaper. The only advantage of 3/8" lances is the possibility to use the threaded sleeves in order to connect two threaded lances together. But if you don't need it, it is better to use regular 16 mm lances.



B2B METALWORKS